

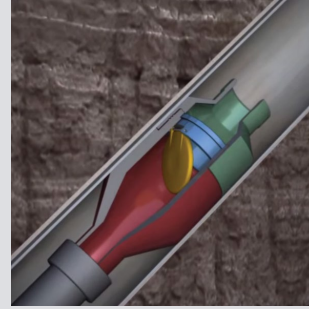
EVALUATIVE CASE STUDY

**Stuck Subsurface Flapper Valve**

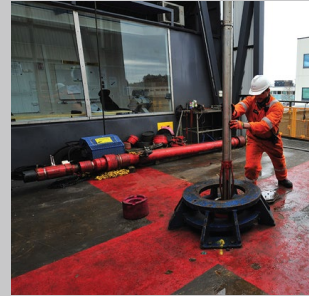
SCENARIO:

Production flow rates show that there is a restriction in the well. It is suspected that the SSV flapper valve is partially stuck open.

*Stuck Flapper*

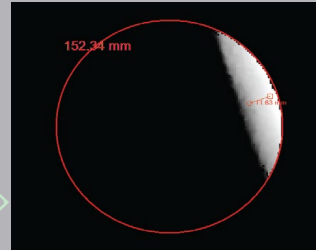


VR90 X-ray imaging run on wireline.

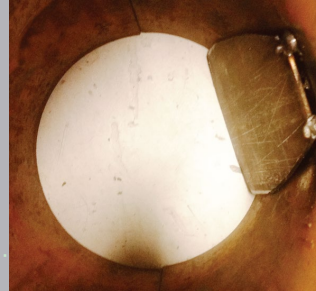


VR90 provides clear, dimensionally accurate 2D images in real time despite the dirty well fluids. Additionally the orientation of the flapper relative to the high side is measured.

2D



*Actual*



Transportable 3D PDF is made whilst the tool is pulled out of the well. Requiring only a standard PDF reader, the document allows fully manipulatable 3D renderings to be quickly and easily sent to the right people.

3D



Flapper valve angle is measured directly from the image, before the tool is even out of the well.

Not only is the flapper valve found to be partially open, but a quantitative measurement is made of its angle and position in the well.

